

The Ormond Heritage
CONDOMINIUM MANAGEMENT ASSOCIATION, INC.
One John Anderson Drive
Ormond Beach, Florida 32176
(386) 672-6778
E-Mail ormondheritage@bellsouth.net



EMERGENCY DISASTER PLAN

(Reviewed & Updated 2011)

**TO ALL OWNERS/RESIDENTS OF
THE ORMOND HERITAGE**

**FROM
EMERGENCY PLANNING COMMITTEE
& MANAGEMENT**

The State of Florida requires all homeowners (condominium) associations to have a **DISASTER PLAN** on file. The **DISASTER PLAN** must be distributed to each condominium owner/resident.

The **DISASTER PLAN** is general information for selected emergency situations including **HURRICANES, FIRES** and **TORNADOES**.
This **PLAN** must be updated as necessary.

The DISASTER PLAN for the Ormond Heritage is attached.
It is the responsibility of each owner/resident to read and become familiar with the contents of the DISASTER PLAN.

This PLAN in no way alleviates individual responsibility of each owner/resident in time of emergency.

This PLAN is a guide.
Exercises of the options provided herein are up to the individual. The Association has no legal responsibility to insure compliance or provide physical assistance.

-1-

THE ORMOND HERITAGE EMERGENCY DISASTER PLAN

Fire-City of Ormond Beach **911 Emergency**
676-3255 Non-emergency

Police Assistance **911 Emergency**
248-1744 Non-emergency

Shelters-website www.volusia.org/storm/shelter.htm for detailed information:
People & Pets
People with Special Needs

Red Cross local 226-1400

Volusia Co. Emergency Management 258-4088

Volusia Health Department 274-0500

Citizen's Information Center (CIC) 1-866-345-0345
(Hotline only During a Disaster)

Florida Power & Light (power outages) 1-800-468-8243

Federal Emergency Mgt. Agency (FEMA) 1-800-621-3362

Managers: Marsha Godtfredsen Office 672-6778
Daryl Godtfredsen Cell 871-5119

Board President: Jack Halsey (Home) 673-5312

The Ormond Heritage Condominium Management Association, Inc. website
www.ormondheritage.org

-2-

Ormond Heritage (OH) Non-Professional Safety Volunteers

OH Non-Professional Safety Volunteers, generally referred to as “Safety Volunteers,” are residents who have consented to help inform all other residents of impending emergencies such as Hurricanes, Fires and Tornados.

Safety Volunteers will assist Management to:

1. Disseminate preparedness information
2. Obtain identification of residents who elect to stay after a Mandatory Evacuation
Notice is given for compilation of an Emergency Resident Listing. This list will be used by fire/police personnel.
3. Disseminate ALL CLEAR information after fire evacuation

At no time are Safety Volunteers expected to stay when they personally are ready to leave or when an evacuation is ordered.

Name	Unit	Phone #
North Building		
Gus Minardi	320	615-9960
Bob Flinton (Nov to May)	420	615-7556
Lann Smith	714	615-8360
South Building		
Rich & Bonnie Ryan	204	676-1056
Doug Dann & Mikelle Streicher	PH3	615-3135
Cris Randall	306	677-4467
East Building		
Olive & Dan Koporec	409	673-4225
David & Shelia Hixon	309	677-7719

HURRICANE

County & City Evacuation Plans

1. Time line for Notification

- Hurricane Watch = **36 hr** notice prior to forecasted impact
- Hurricane Warning = **24 hr** notice prior to forecasted impact
- Hurricane Evacuation = **requires at least 12 hrs of day light** for notice to start - varies per storm

2. City Procedures

- Bridges - will be closed when deemed unsafe for vehicle operation due to sustained winds (approx. 35-40 MPH).
- Security, Health & Safety - after the bridge closes there will be no 911 services available (police, fire, medical).
- Resident ID - personal identification (current driver's license, passport) with an Ormond Beach address may be required for return over the bridge.

Ormond Heritage (OH) Evacuation Plan

1. Hurricane Notification & Communication Sources

- Resident mail, e-mail, OH website
- OH Bulletin Board Postings
- Closed-Circuit TV Channel #97 or #704 (digital)
- OH PA System (in house speakers)
- 21st Century Phone Alert System – 386-254-1500 to pre-register

2. OH Emergency Resident Listing

- A list required by fire/police personnel of residents who elect to remain after a Mandatory Evacuation Order

3. Buddy System – OH Residents & Buddies

- A system whereby each resident chooses a friend or neighbor who they will watch out for and who will in turn watch out for them
- Need to establish a personal Buddy relationship
- Buddies should establish a departure time and predetermine evacuation needs

HURRICANE (cont.)

4. Evacuation of Disabled & Elderly

- Residents in this category should plan well in advance of evacuation (start today)
- Application for Volusia County Special Needs Shelter is available (See Shelter website pg. 2)
- Special Needs Shelter will schedule transportation for registered applicants

5. **Communication for Return to OH After An Evacuation**

Monitor

- TV (local cable channel 13)
- Radio (WMMB 1240 AM or WMFE 90.7 FM)
- Newspapers
- Websites (www.ormondheritage.org or www.volusia.org or www.FPL.com/preferences)

Contact

- Common Point of Contact (See FAQ pg. 9)
- OH E-Mail (ormondheritage@bellsouth.net)
- OH Office Phone (386-672-6778)
- **Do Not** Call Fax Line

FIRE

OH Evacuation Plan

1. Notification & Communication of Fire Emergency

- Fire Alarm – Flashing Light & Siren System will activate
- OH PA System will give instructions

2. Buddy System – OH Residents & Buddies

- Need to establish a personal Buddy relationship

3. Evacuation of Disabled & Elderly

- Needs Assistance List - a list of residents who need assistance navigating the stairway during an emergency. Resident's names, unit numbers and special needs information to be used by Firemen are placed on a list. The Needs Assistance List is updated as information is provided by the individual owners/residents to OH Management.

-5-

FIRE (cont.)

3. Evacuation of Disabled & Elderly (cont.)

- **Here's how it works:** A resident uses a cane* and has difficulty in using the stairway. Their name is placed on the Needs Assistance List.

*Wheelchair, walker, uses oxygen, blind, deaf

- When an Alarm occurs, the resident unlocks the front door of their Unit and waits for Firemen assistance, keeping the entry way clear. The Firemen take the Needs Assistance List and finds each person on the list. The Firemen will help each person to safety.

4. Group Gathering Locations/Maps

- Assembly Areas - west end of pool area over John Anderson Entrance or Northeast parking lot
(See diagram pg. 11)
- Emergency Exit Maps – Are located in Elevator lobbies & First floor staircases

5. Notification of Fire Status & Location

- Managers and personnel assisted by Safety Volunteers will provide verbal updates

6. All-Clear Procedure – Return to Residence

- Managers assisted by Safety Volunteers will advise residents

-6-

TORNADO

OH Emergency Plan

1. Time Line for Notification

- Tornado Watch Alert – will be given when conditions are ripe for development
- Tornado Warning Alert – will be given when system is imminent or whenever there is severe thunderstorm or hurricane activity

2. Notification & Communication Sources

- 21st Century Phone Alert System – 386-254-1500 to pre-register
- TV (local cable channel 13)
- Radio (WMMB 1240 AM or WMFE 90.7 FM)
- OH PA System

3. Procedure

- Today – Prepare individual Emergency Kit (See Volusia County Official Disaster Preparedness Guide)
- Tornado Watch – Move Emergency Kit to Safe Room (an interior room, closet or bathroom) or to your car in garage

- Tornado Warning – Avoid open areas, windows & glass. Go To Safe Room or Your Car in Garage or your Buddy's car
 - **The OH garage is the best shelter available in a tornado.**
4. **All-Clear – Return to Living Areas**
- Do not leave garage until ALL-CLEAR is given by OH PA System, Fire Dept. &/or Managers
 - Safety Volunteers will assist with information as needed
 - Residents will need to make visual inspection of their Unit and report to OH Management any damage or safety concerns

-7-

FREQUENTLY ASKED QUESTIONS (FAQs)

Q: Who are the OH Non-Professional Safety Volunteers & what do they do?

A: Residents who help collect & disseminate safety information (See pg. 3).

Q: What is the Emergency Resident Listing?

A: A list of residents not evacuating in non-compliance with a Mandatory Evacuation order.

Q: What is the Needs Assistance List?

A: A list of special needs residents who require assistance.

Q: What is a Common Point of Contact?

A: Is a person or group of persons that provides reciprocal information during an emergency. Information is shared regarding individuals, facilities and future events. Each resident is responsible to establish a personal point of contact or utilize the OH website.

www.ormondheritage.org

Q: How will I know when to leave for an emergency?

A: FIRE – PA system will sound a verbal message to evacuate & emergency lights will flash in the corridors.

HURRICANE – This is a personal decision. Early departure is recommended. Leave before or when evacuation notice becomes mandatory.

TORNADO – When alert is sounded (See pg. 7).

Q: Where do I go in the event of an emergency?

A: FIRE – Go to the Assembly Area at the west end of the pool over the John Anderson entrance or Northeast parking lot.

HURRICANE – Go in-land from coastal areas, to relatives or friends or to a shelter (See pg. 2). This is a personal decision.

TORNADO – Do not leave the building. Seek shelter in your Unit's safe room or the basement in your car away from the garage doors.

Q: What is an Emergency Kit?

A: It is a survival kit (See Volusia County Official Disaster Preparedness Guide).

FAQs (cont.)

Q: What should I do when I leave my Unit for an emergency?

A: FIRE – Close all windows & doors.

HURRICANE – Close all windows & doors (See Volusia County Official Disaster Preparedness Guide).

TORNADO - Close all windows & doors.

Q: When can I return after an evacuation?

A: FIRE & TORNADO - When notified by OH Safety Volunteers and/or Managers

HURRICANE – Prior to returning contact those listed (See pg. 5).

Q: What is the 21st Century Phone Alert System?

A: It is a land-line phone notification by the county of an emergency within our area. Only residents who are pre-registered will receive notification (See pg. 4).

Q: Can I use a portable generator on my balcony, patio or walkway?

A: **No!** Generators cause a dangerous health hazard in partially enclosed spaces due to carbon monoxide poisoning. For the same reason grills are not permitted by FL State Law.

Index

Assembly Area Map	11
Contacts (emergency/non-emergency)	2
Emergency Resident Listing	4

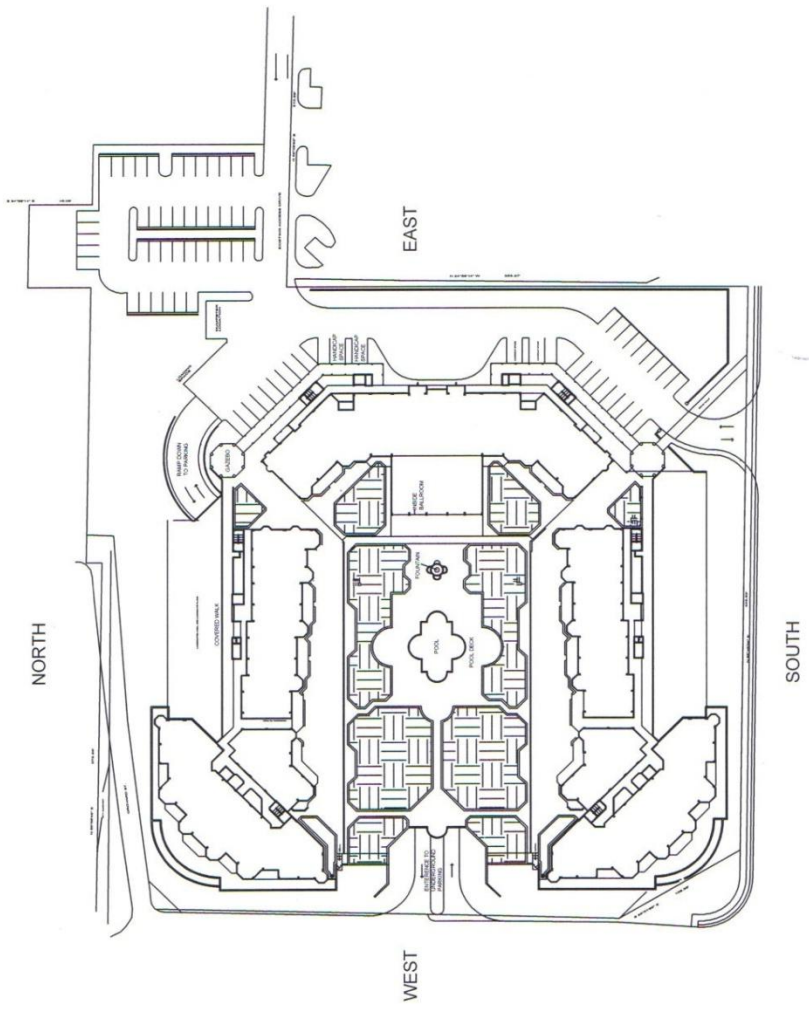
FAQ's	9, 10
Fire Plan	5, 6
Hurricane Plan	4, 5
Needs Assistance List	5
OH Non-Professional Safety Volunteers	3
Tornado Plan	7
21 st Century Phone Alert System	4, 9


FIRE EVACUATION ASSEMBLY AREA MAP

Optional assembly area is located at the Northeast parking lot

as indicated by 

Halifax Blvd



Assembly area is located at the West end of the courtyard
 as indicated by 

John Anderson Drive

Halifax River